

from 30 Seconds to Mars - A Beautiful Lie

From Yesterday

Words and Music by Jared Leto

Drop D tuning, down 1 step.
(low to high) C-G-C-F-A-D

Intro

Moderately

♩ = 135

* C5

Cmaj9(no3rd)

(Synth.) 7 sec

**Gtr. 1

www.Piano-Sheets.Ru

The Intro section consists of two staves. The top staff is a treble clef with a synth line starting with a 7-second delay, followed by a series of eighth notes. The bottom staff is a bass clef with a guitar 1 part, featuring a series of eighth notes in a descending pattern.

*Chord symbols reflect overall harmony

**Synth. arr. for gtr. Gradually fades in over next 6 meas.

Gtr. 1 tacet
Fsus2

Am

Gtr. 2 (clean)

pp

The Gtr. 2 (clean) part consists of two staves. The top staff is a treble clef with a series of eighth notes. The bottom staff is a bass clef with a series of eighth notes.

Gtr. 3 (clean)

pp

***w/ delay
let ring throughout

The Gtr. 3 (clean) part consists of two staves. The top staff is a treble clef with a series of eighth notes. The bottom staff is a bass clef with a series of eighth notes.

***Delay set for dotted eighth-note regeneration w/ 1 repeat

Fsus2

Am

The Fsus2 and Am chords are shown on two staves. The top staff is a treble clef with a series of eighth notes. The bottom staff is a bass clef with a series of eighth notes.

Rhy. Fig. 1

mp

1. He's a stran-
End Rhy. Fig. 1

The Rhy. Fig. 1 part consists of two staves. The top staff is a treble clef with a series of eighth notes. The bottom staff is a bass clef with a series of eighth notes.

Riff A

mp

End Riff A

The Riff A part consists of two staves. The top staff is a treble clef with a series of eighth notes. The bottom staff is a bass clef with a series of eighth notes.

2 Verse

Gtr. 3: w/ Riff A (4 times)

Fsus2

Am

- ger to some and a vi - sion to none. He can nev - er get e - nough, get e - nough

Rhy. Fig. 2

Gtr. 2

Fsus2

of the one. For a for - tune he'd quit, but it's hard to ad - mit how it ends

End Rhy. Fig. 2

Am

Gtr. 2: w/ Rhy. Fig. 2
Fsus2

and be - gins. On his face is a map of the world.

Rhy. Fig. 3

Gtr. 4 (clean)

mp

Am(add9)

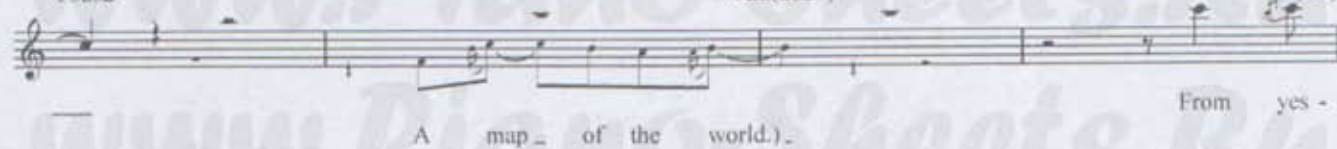
(A map of the world. On his face is a map of the world.

End Rhy. Fig. 3

Gtr. 2: w/ Rhy. Fig. 1
Gtr. 4: w/ Rhy. Fig. 3

Fsus2

Am(add9)



§ Chorus

2nd time, Gtr. 3 tacet

2nd & 3rd times, Gtr. 9 tacet

C5

G5

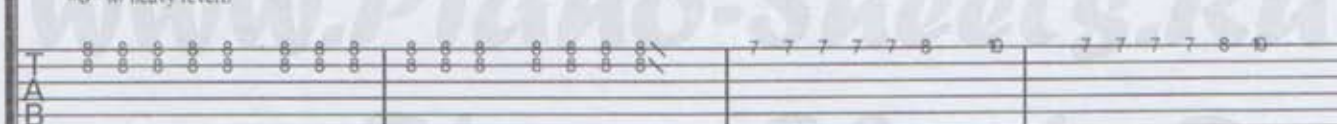


Riff C

Gtr. 8 (dist.)



mf w/ heavy reverb



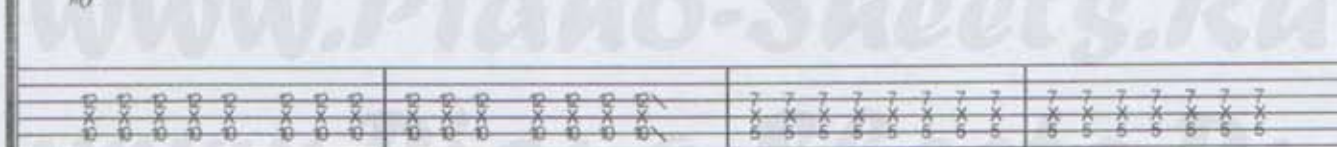
Riff B

Gtr. 7 (dist.)

End Riff B



mf



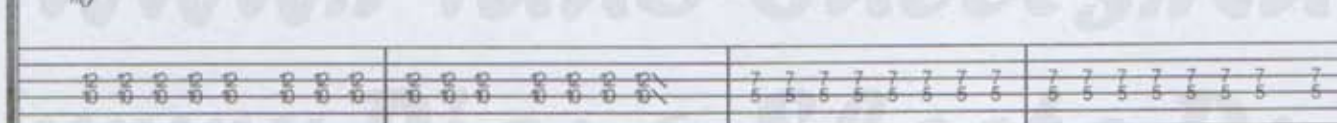
Rhy. Fig. 4A

Gtr. 6 (dist.)

End Rhy. Fig. 4A



mf



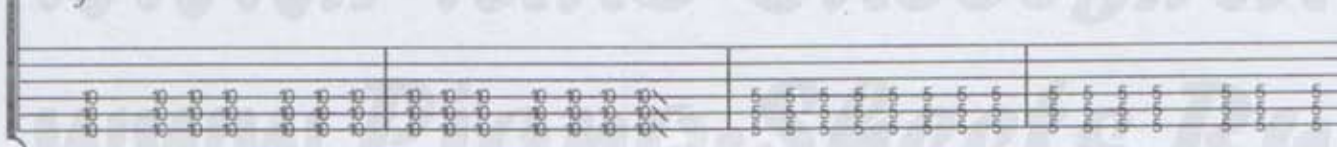
Rhy. Fig. 4

Gtr. 5 (dist.)

End Rhy. Fig. 4



f



Am F5 G7/F G

ter - day, the fear, From yes -

Riff D End Riff D

Rhy. Fig. 5A End Rhy. Fig. 5A

Rhy. Fig. 5 End Rhy. Fig. 5

Gtrs 5 & 6 w/ Rhy. Figs 4 & 4A
Gtr. 7 w/ Riff B
C5

G5 To Coda 1

ter - day, it calls him, but

Gtr. 8

1/4

TAB

F#sus2 To Coda 2 00 G5
 he does-n't want to read the mes - sage here.
 Gtr. 8 End Riff C Fill 1 End Fill 1
 T A B
 Gtr. 7
 Gtr. 6
 Gtr. 5

Verse

Gtrs. 5 - 8 tacet
N.C.

Gtr. 3: w/ Riff A (1 3/4 times)
F5


2. On a moun - tain he sits, — not of gold, — but of shit. — Through the blood —

Am F5



— he can look, — see the life — that it took, — From a coun - cil of one, — he'll de - cide —

Am



— when he's done — with the in - no - cent, — On his face —

F5



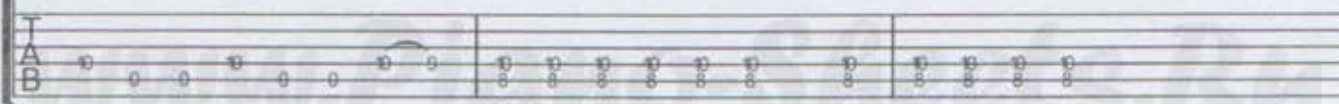
— is a map — of the world, — a map — of the world, —

Gtr. 3 *Gtrs. 3 & 9



PM-----

*Gtr. 9 (clean), played mp



PM-----

Am F5

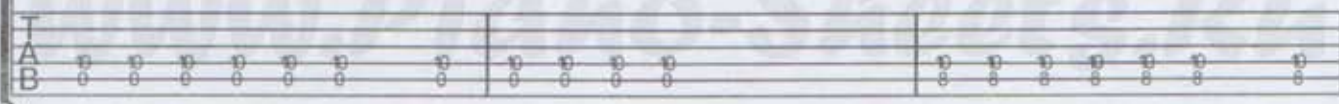


— On his face — is a map — of the world, —

PM----- PM-----



PM-----



PM-----

Am Asus2 D.S. al Coda 1

Gtrs. 3 & 9 a map of the world. From yes -

(P.M.)-----4 P.M.-----4

Gtr. 6

mp *f*

*Vol. swell

Coda 1

Fsus2 F6sus2

he does-n't want to read the mes - sage, he does-n't want to read -

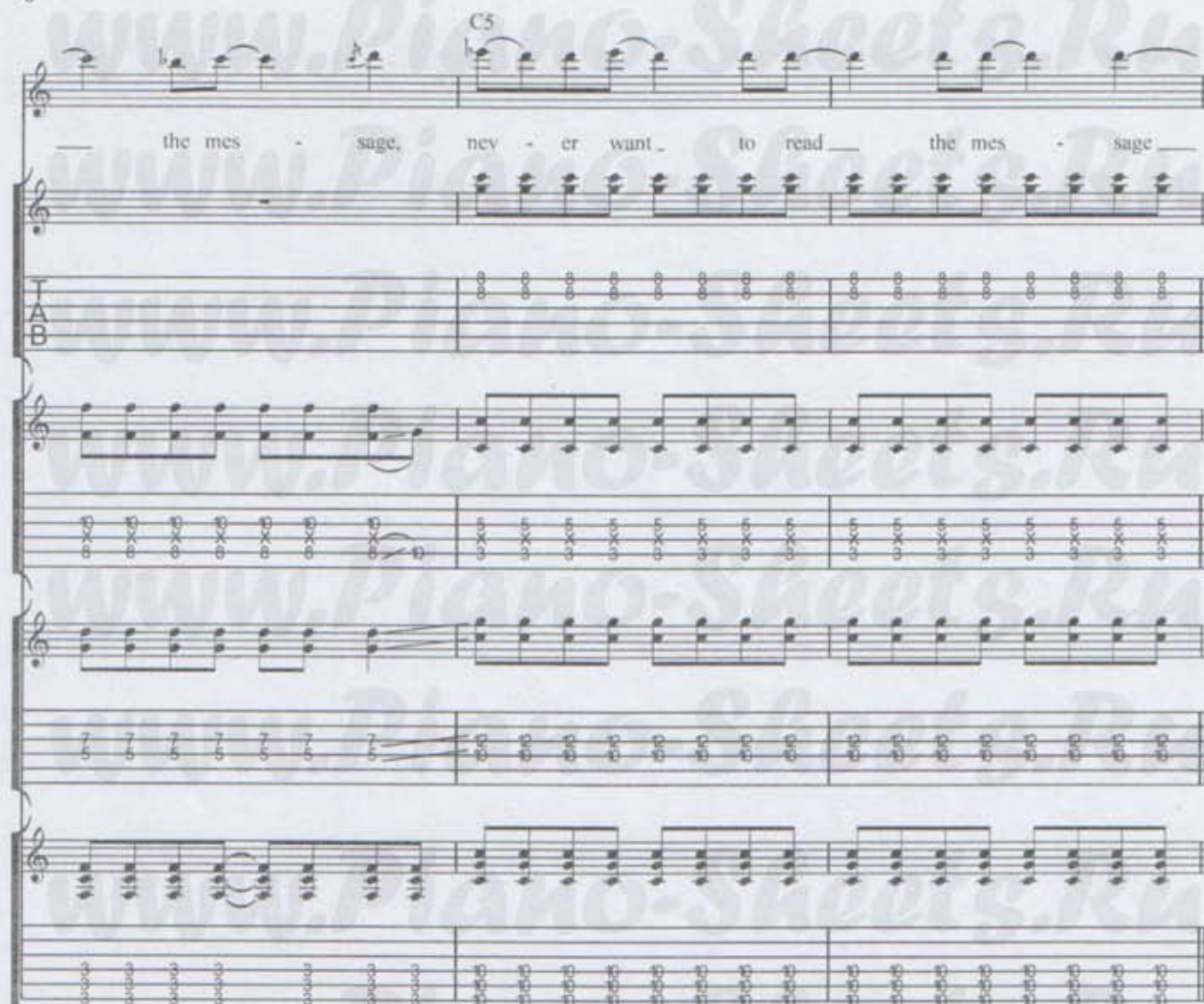
Gtr. 8

Gtr. 7

Gtr. 6

Gtr. 5

the mes - sage, nev - er want - to read the mes - sage

**Bridge**

Gtrs. 6 & 8 tacet

A5

E5

F5

E5

F5

N.C.

C5

G/B

here.

Riff E

Gtr. 7

End Riff E

Rhy. Fig. 6

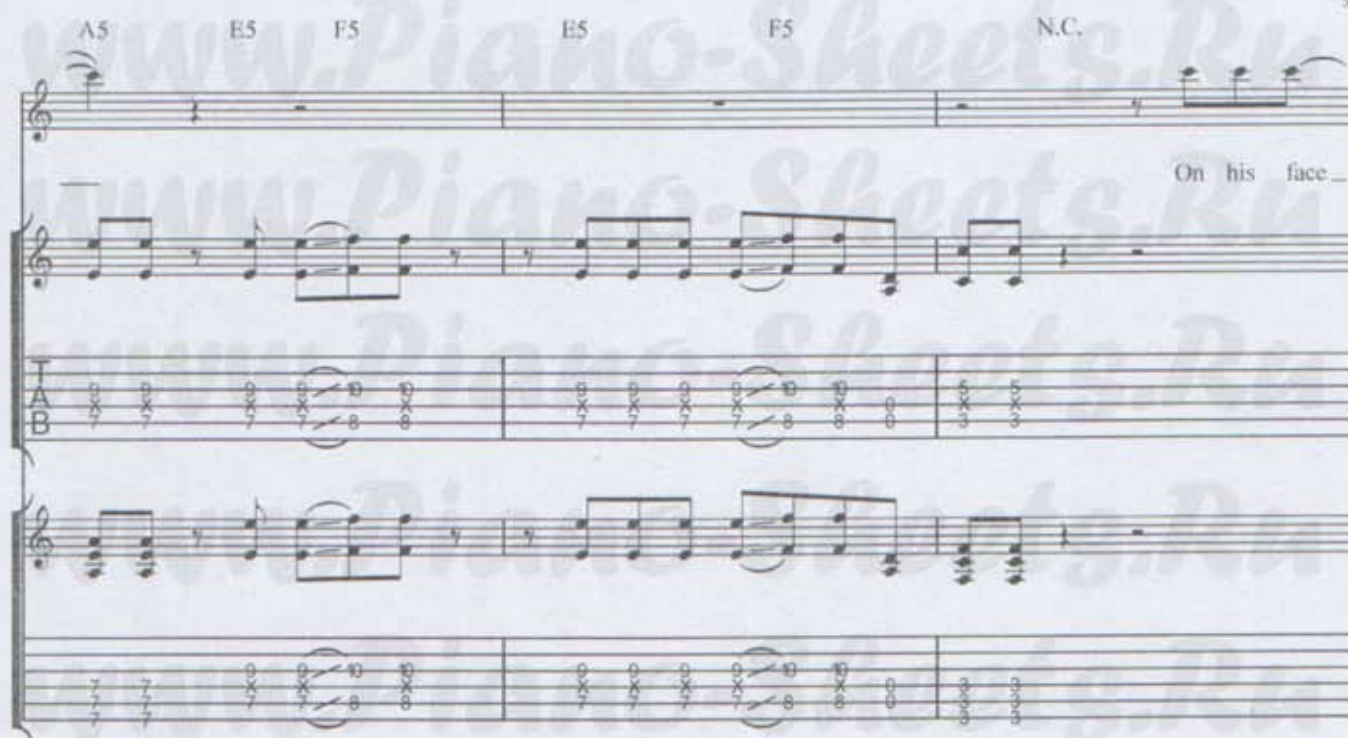
Gtr. 5

End Rhy. Fig. 6



A5 E5 F5 E5 F5 N.C.

On his face...



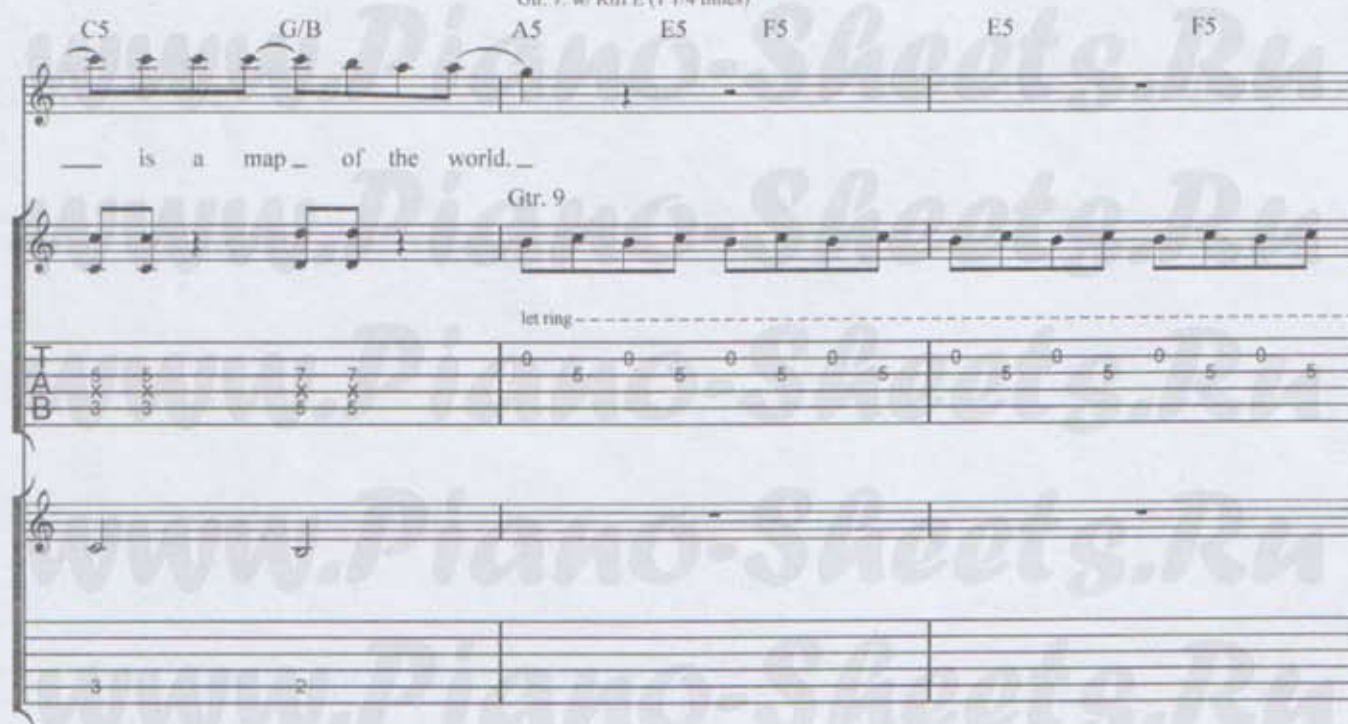
Gtr. 5: w/ Rhy. Fig. 6 (1 1/4 times)
Gtr. 7: w/ Riff E (1 1/4 times)

C5 G/B A5 E5 F5 E5 F5

... is a map of the world.

Gtr. 9

let ring



Gtr. 9 N.C. C5 G/B A5 E5 F5

(let ring)

let ring



E5 F5 Gsus4 G5 D.S. al Coda 2
N.C.

From yes -

Gtr. 9

(let ring)

TAB

Gtrs. 5 & 7

mf *f*

Coda 2

Gtr. 8, w/ Fill 1
C5

here. From yes -

Gtr. 7

TAB

Gtr. 6

Gtr. 5

Chorus

Gtrs. 5 & 6: w/ Rhy. Figs. 4 & 4A

Gtr. 7: w/ Riff B

Gtr. 8: w/ Riff C

C5



Gtrs. 5 & 6: w/ Rhy. Figs. 5 & 5A

Gtr. 7: w/ Riff D

Am



Gtrs. 5 & 6: w/ Rhy. Figs. 4 & 4A

Gtr. 7: w/ Riff B

C5



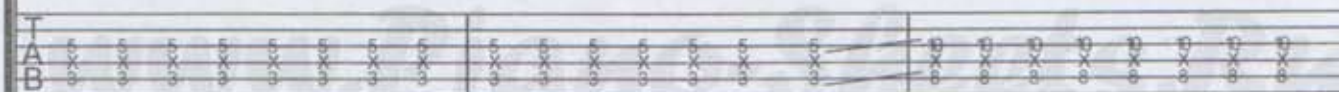
F#sus2

Gtr. 8: w/ Riff C (1st 2 meas.)

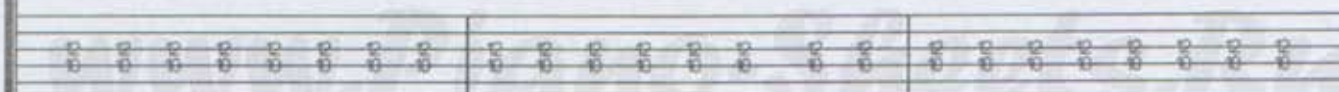
Fadd9



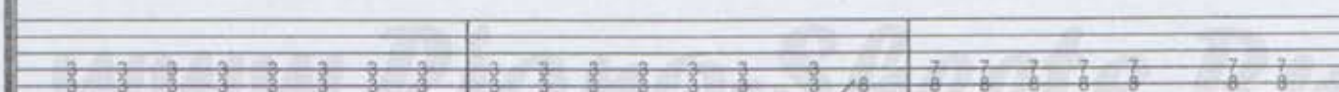
Gtr. 7



Gtr. 6

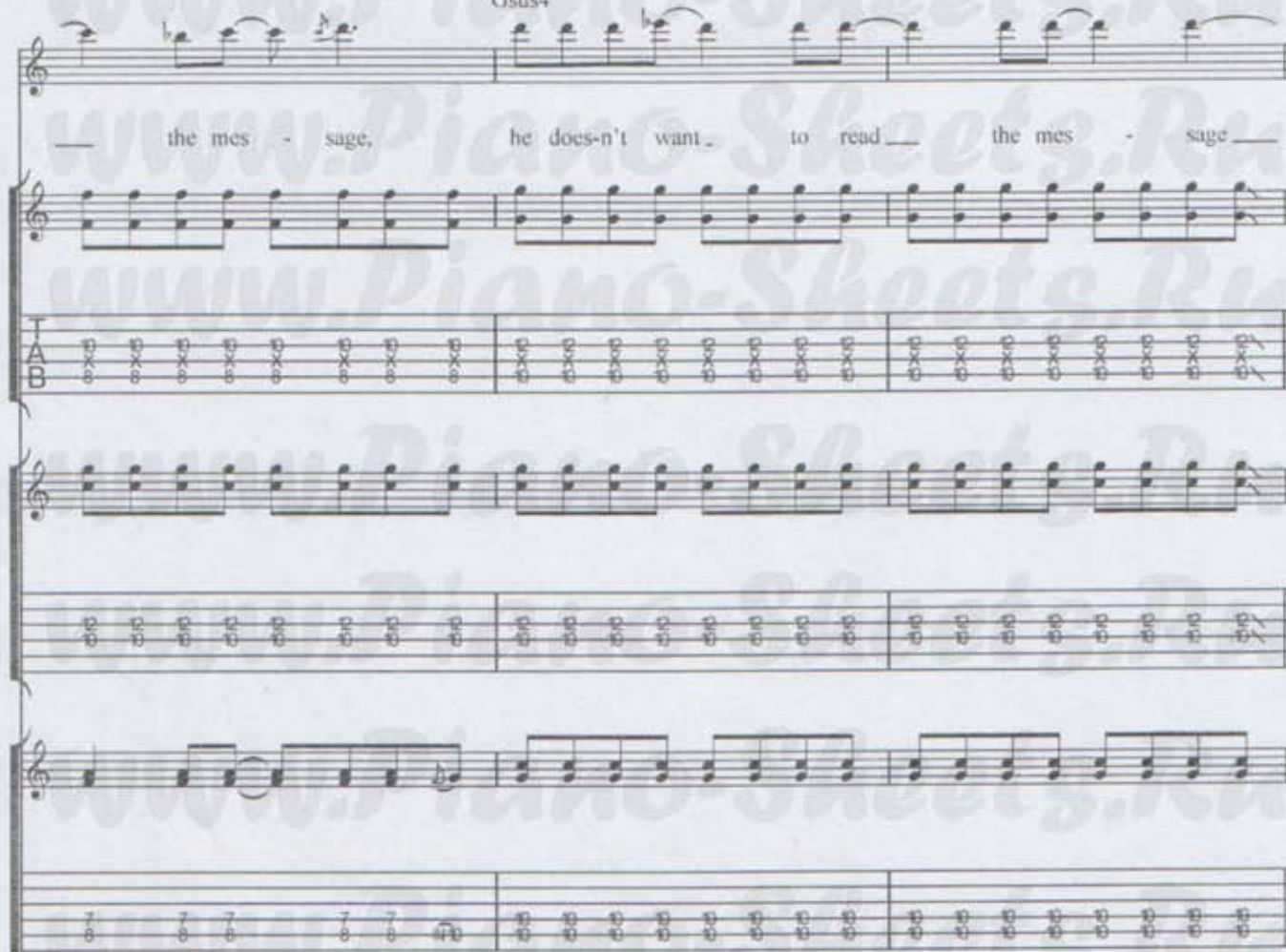


Gtr. 5



Gtr. 8. w/ Filt 1
Gsus4

the mes - sage, he does-n't want to read the mes - sage



Outro

Gtr. 6 tacet
A5

E5

F5

E5

F5

N.C.

here.

Gtr. 7

Gtr. 5

